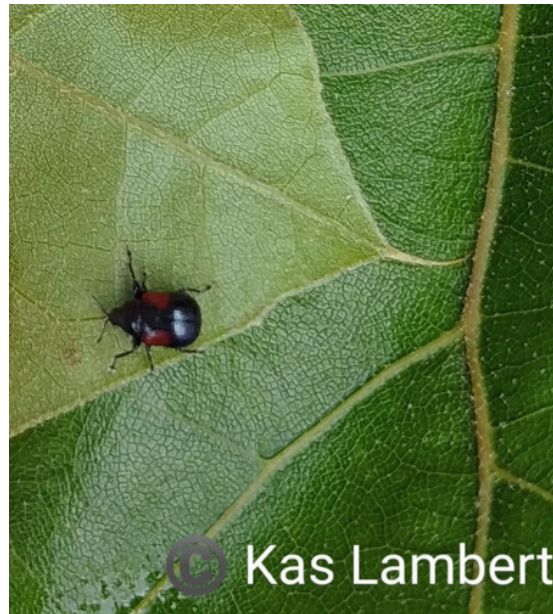


# Leaf-Rolling Weevil

## *Attelabus bipustulatus*



Leafrolling weevils are remarkable insect parents. With a little chewing and a lot of rolling they create a safe space for their offspring. An egg is laid at the tip of the leaf area and then rolled up into a bedroll called the nidus which is shown below.



When the egg hatches the grub (baby weevil) will feed on the leaf within the safety of the roll where predators can not reach it.

**By Kasandra Lambert**